

# OpenEMR Reference Architecture



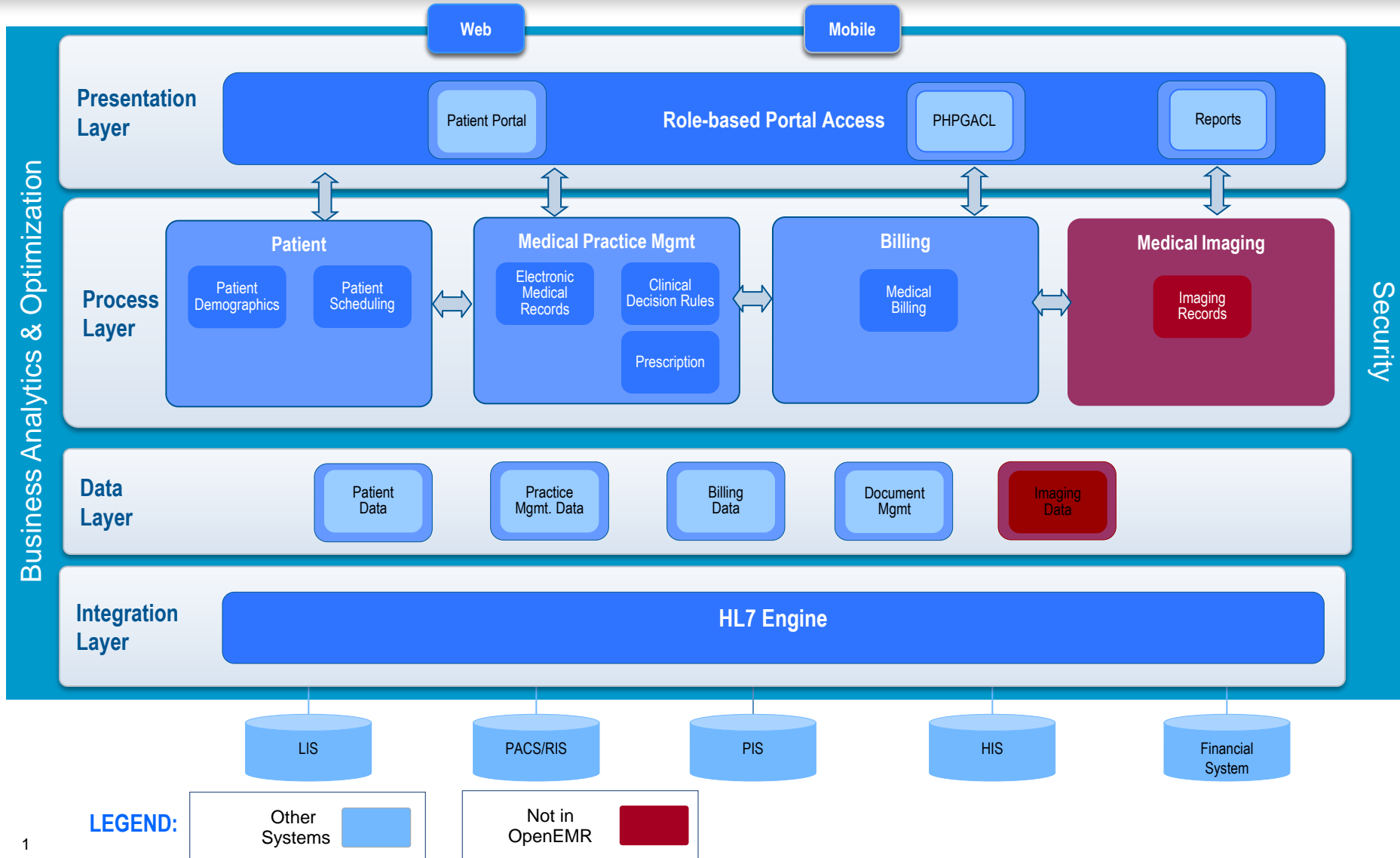
Providers



Hospitals

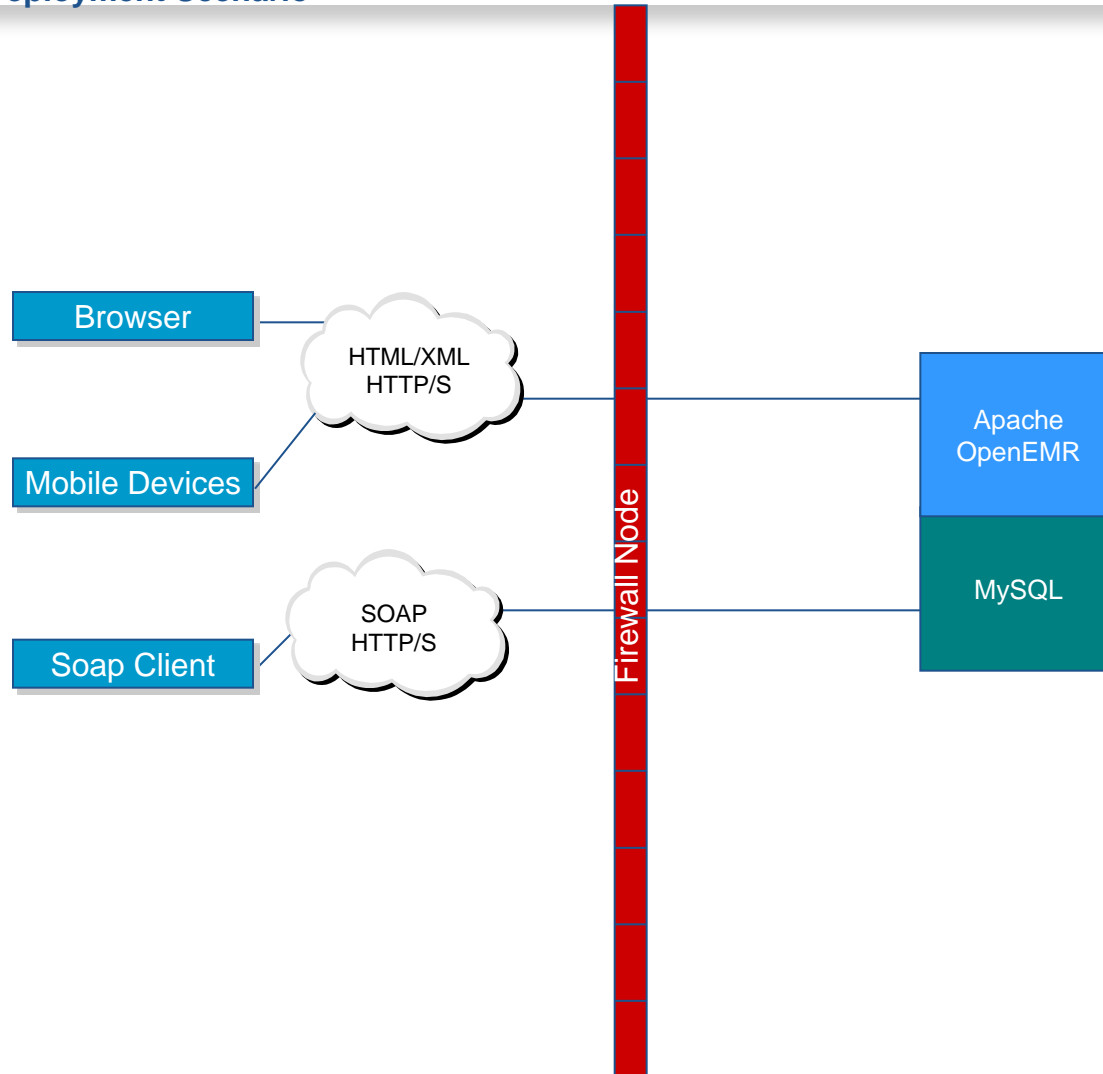


Regional Clinics



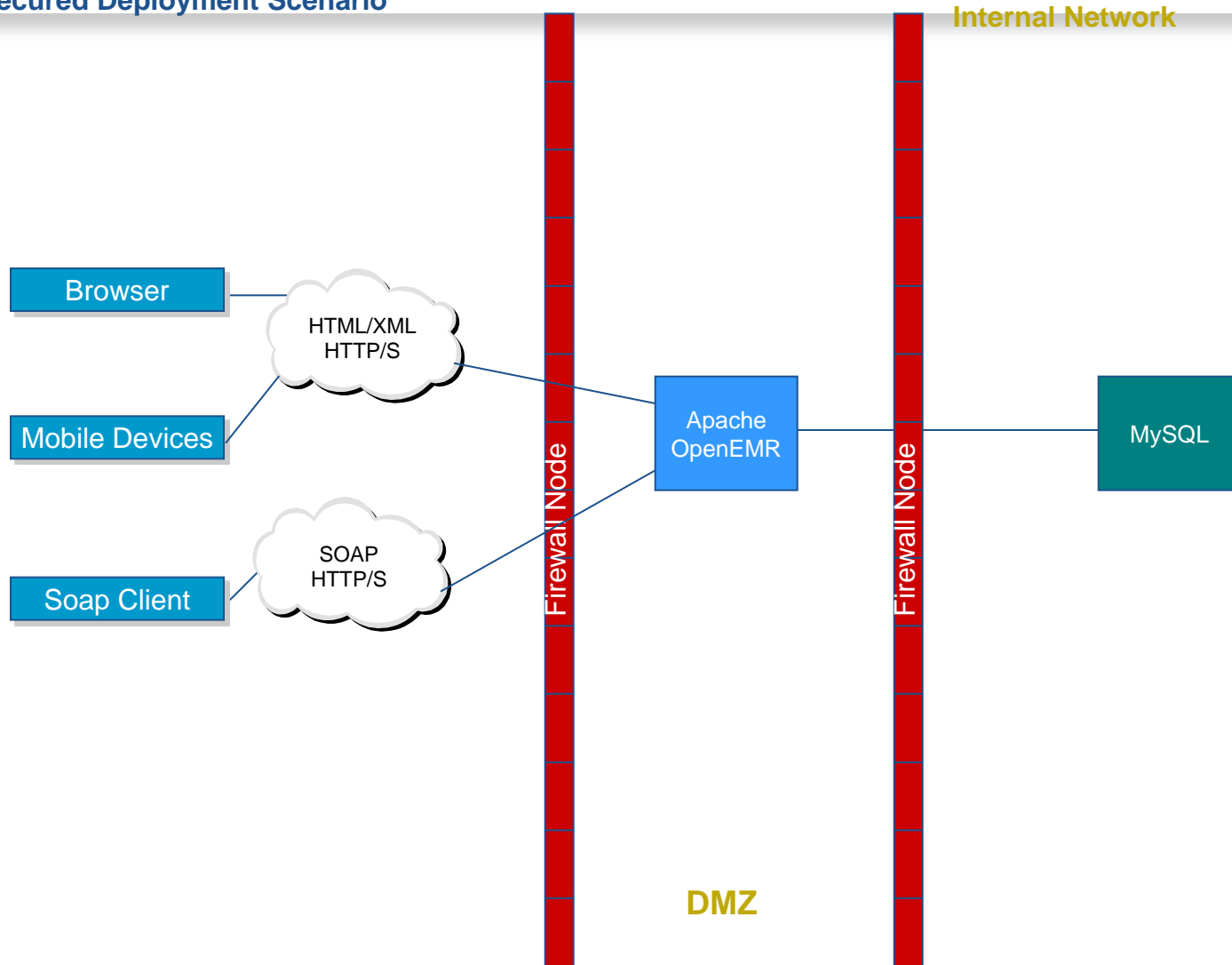
# Operational Model – System Topology View

## Typical Deployment Scenario



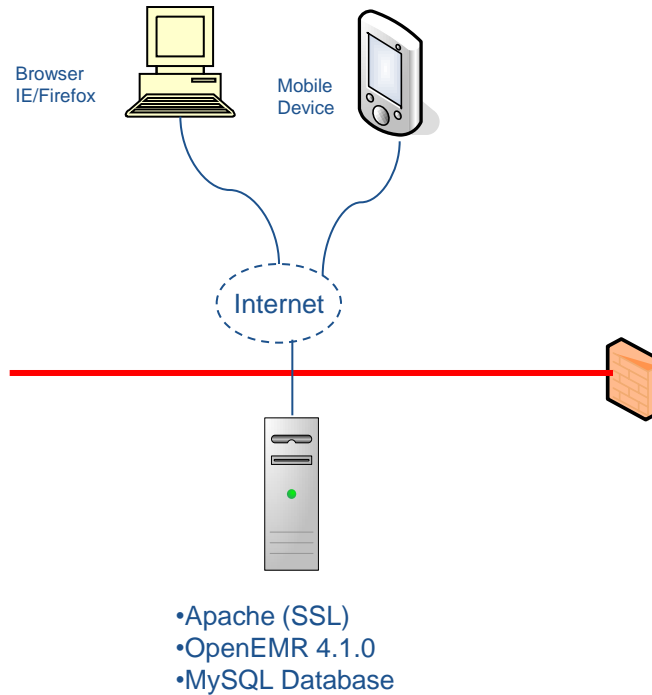
# Operational Model – System Topology View

## More Secured Deployment Scenario



# Operational Model – Software View

## Typical Deployment Scenario



# Operational Model – Software View

## More Secured Deployment Scenario

